

# **MPI TS300-PCB** | 300 mm Manual Probe System for PCB Testing

## For accurate and reliable RF and mmW measurements on PCB boards

### Microscope Mount and Movements

- Stable bridge for high quality optics
- 550 x 300 mm fast movement range, to be combined with 50 x 50 mm XY manual (90deg tilt) or programmable (140 linear Z) movements
- Programmable movement requires SENTIO® for manual systems

### Various Optics

- EZ10, SZ10, MZ12 with large WD and optical resolving power below 2 µm
- iMAG® or iMAG®-II versions in case of SENTIO®

### Probe Platen

- Stable and rigid design
- Supports DC/CV and RF measurements
- Rectangular adjustments for RF positioners
- Designed for 500 x 460 mm XY probing area

### Unique Platen Lift

- Three discrete positions for contact, separation (300 µm) and safety loading 3 mm
- “Auto Contact” position with ±1 µm repeatability for consistent contact quality
- Safety lock function at loading position

### Adjustable Platen Height

- Micrometer control for precise adjustment
- 20 mm range for various applications
- Including platen height reference scale

### Small Footprint

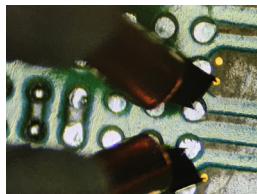
- Designed for bench top use
- Comes with vibration absorber base
- Low profile design for maximum usability

### Vibration Isolation Table, various options

- Standard, Advanced or TMC type on request

### TITAN™ Probes

- Robust Ni-alloy tip material for probing on hard and rough pads
- Short forward skate for probing on small solder bumps and HDI traces
- Unique probe tip visibility for consistent contact and repeatable calibration and measurements
- Flexible tips for probing on uneven surfaces



### \*\*\*Available Options\*\*\*

- Vibration isolation platform
- Various MicroPositioners



### Optional: SENTIO® for Manual Systems

- Revolutionary multi-touch, single window GUI for easy and intuitive system operation
- Scroll, zoom, move commands mimic modern smart mobile devices, making everyone the operation expert just in minutes
- Switching between applications is just a matter of a finger swipe
- Integrated workflow with MPI RF calibration software QAlibria® provides unparalleled user experience
- GPIB, TCP/IP interface for remote control

### RF Calibration

- QAlibria® as unique calibration software
- Optional 2 auxiliary chucks for calibration substrates
- Built-in ceramic for accurate calibration
- 1 µm flatness for consistent contact quality

### With Integrated Hardware Control Panel

- Faster, safer and more convenient system operation and control
- Keyboard and the mouse are at the system control panel for a single-point operation with the system and controlling test instrumentation

### PCB-Holders & Chucks

- Various non-thermal or thermal 300 mm chucks
- Choice of triaxial or coaxial connection
- Wide range of temperatures
- Holders for PCBs from 2" x 2" to 24" x 20" size, integrated AUX chucks

### Front Mounted Vacuum Control

- Easy access
- Clearly marked

### Chuck XYZ Stage Movement

- Unique puck controlled air bearing stage for quick single-handed operation
- 330 x 395 mm XY total stage movement
- 25 x 25 mm XY fine micrometer adjustment
- Resolution < 1.0 µm (0.04 mils) @ 500 µm/rev
- Extra wide Y-range for easy loading
- ±5° Theta fine adjustment

### QAlibria®

- Metrology-grade multiline TRL calibration by integration with NIST StatistiCal
- TMR/TMRR calibration methods with on-board standards
- Simple, intuitive, multitouch operator interface
- Open data base for probes and custom calibration standards