

# 旺矽科技股份有限公司

## 6223.TT



## Presentation Disclaimer

---

The information herein contains forward-looking statements. We have based these forward-looking statements on our current expectations and projections about future events. Although we believe that these expectations and projections are reasonable, such forward-looking statements are inherently subject to risks, uncertainties and assumptions about us, including, among other things: the intensely competitive Semi-conductor, and LED industries and markets; Cyclical nature of the semiconductor industry; Risks associated with global business activities; General economic and political conditions. All financial figures discussed herein are prepared pursuant to IFRS. All audited figures will be publicly announced upon the completion of our audited process.

# 1

## Probe Card

Since 1995

# 2

## Photonics Automation

Since 2001

# 3

## Advanced Semiconductor Test

Since 2014

# 4

## Thermal Test

Since 2015

# 5

## Celadon Systems

Since 2021



## MPI 全球據點

MPI ATV SYSTEMS

MPI SUZHOU

MPI AMERICA

MPI CELADON

MPI FOCUS MICROWAVES

MPI CORPORATION

- MPI Operation Offices
- MPI Sales & Support Offices
- MPI Representatives

### MPI Locations

Worldwide

Taiwan



MPI America  
USA (2017)



MPI Suzhou  
China (2017)



Celadon Systems  
USA (2021)



ATV Systems  
Germany (2025)



Focus Microwaves  
Canada (2025)



Headquarters  
TW (2000)



Luzhu Office  
TW (2006)



2<sup>nd</sup> Production Site  
TW (2012)

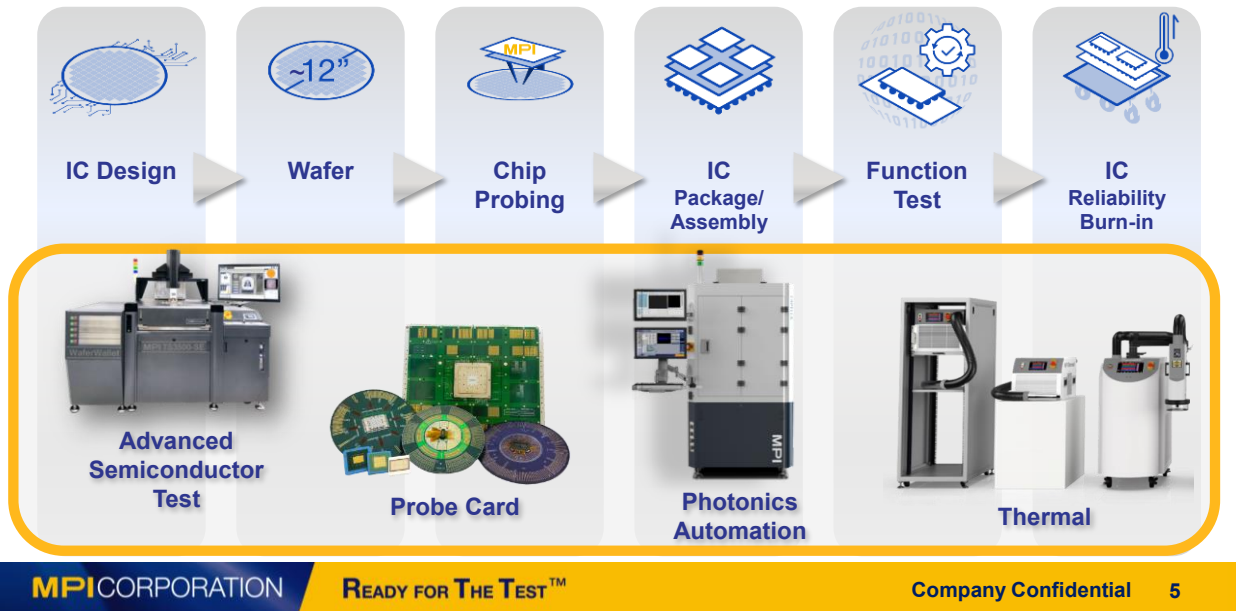


Xintpu Office  
TW (2014)



3<sup>rd</sup> Production Site  
TW (2021)

# MPI The Powerhouse of Testing Solutions



## Business Contents

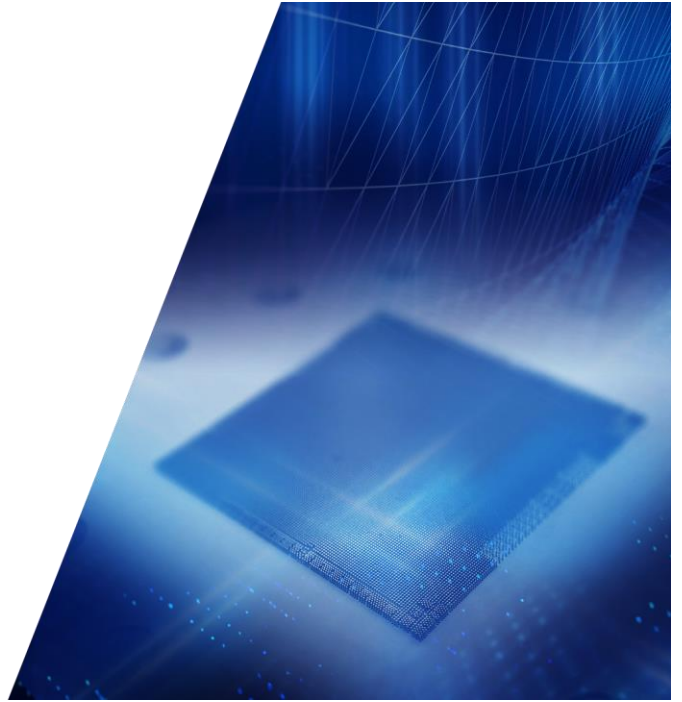
- Probe Card
- Photonics Automation
- Thermal & AST



## Financial Statements

# Probe Card

半導體事業部  
(探針卡)



## MPI Probe Card

Advanced Wafer Sort Test Solutions

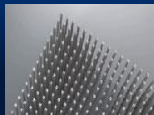
## Vertical / MEMS Cantilever



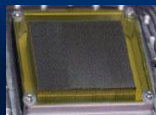
### Features



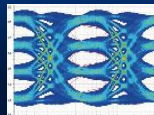
Fine Pitch



MEMS



High Pin Count



High Speed



Substrate



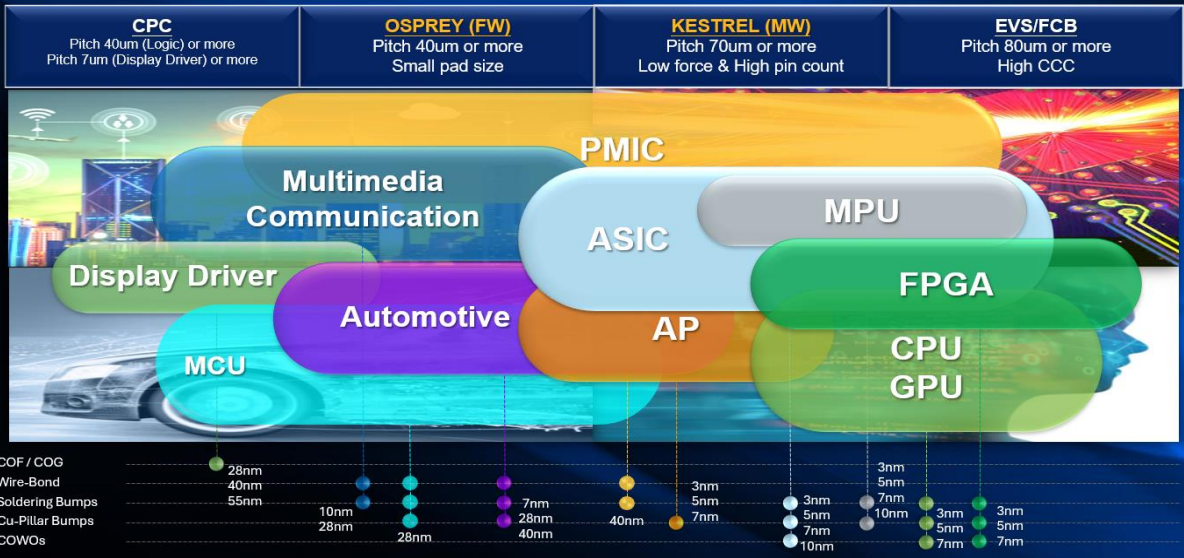
Hand-wired



RF

# MPI Probe Card

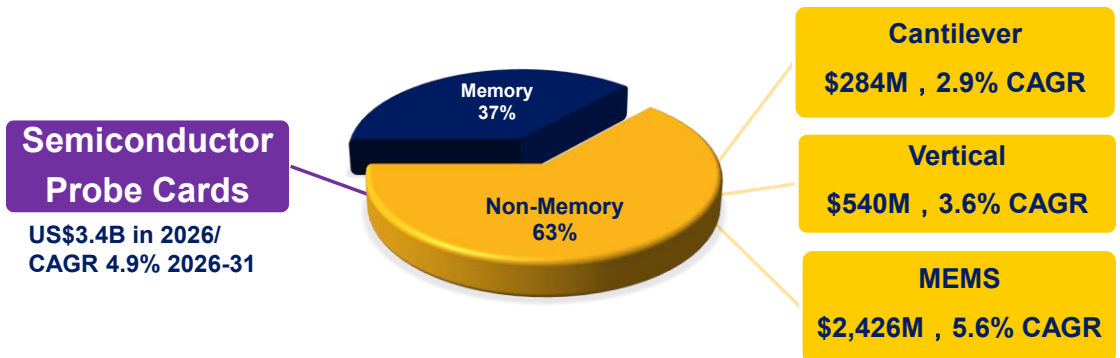
Full range of products for the applications  
sufficient coverage solutions to IC markets



MPI CORPORATION

9

## MPI 全球探針卡市場



Source: YOLE(2026)

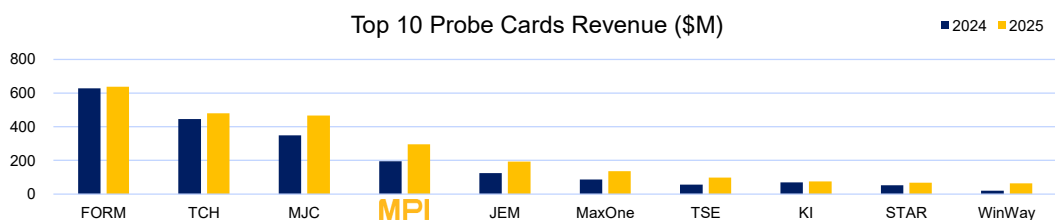
MPI CORPORATION

READY FOR THE TEST™

Company Confidential 10

## MPI 自製IC探針卡供應商

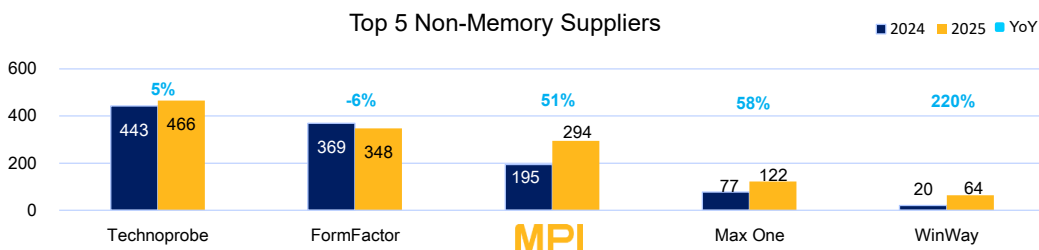
(Rank)		2021	2022	2023	2024	2025
FormFactor	USA	1	1	1	1	1
Technoprobe	Italy	2	2	2	2	2
Micronics Japan	Japan	3	3	3	3	3
<b>MPI Corporation</b>	<b>Taiwan</b>	<b>5</b>	<b>5</b>	<b>4</b>	<b>4</b>	<b>4</b>
Japan Electronic Materials	Japan	4	4	5	5	5



Source: YOLE(2026)

## MPI 前五大非記憶體探針卡供應商

(Rank)		2020	2021	2022	2023	2024	2025
Technoprobe	Italy	2	1	1	1	1	1
FormFactor	USA	1	2	2	2	2	2
<b>MPI Corporation</b>	<b>Taiwan</b>	<b>3</b>	<b>3</b>	<b>3</b>	<b>3</b>	<b>3</b>	<b>3</b>
Max One	CH		16	13	6	4	4
Winway	Taiwan		19	10	18	15	5



Source: YOLE(2026)

## MPI Probe Card: 提供全方位解決方案

- **Comprehensive Product Range for Circuit Testing** 全方位的產品布局

MPI provides omnidirectional products to global customers, including fine pitch CPC, high speed VPC and low force MEMS solutions.

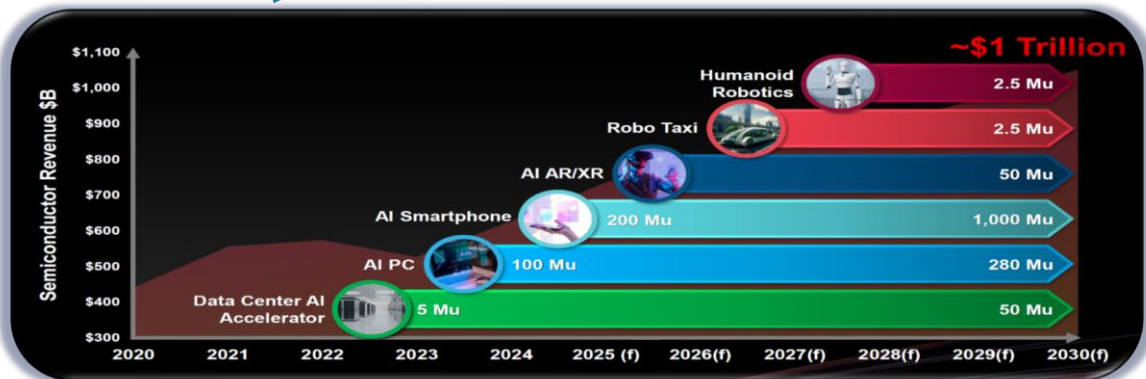
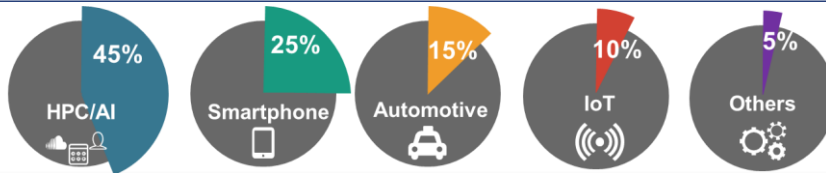
- **Solid Global Clientele** 堅實的國際合作夥伴

MPI works closely with worldwide market leaders, especially for the AI, HPC application related.

- **Complete Probe Card Solution** 完整的探針卡整合方案

Provide probe head, substrate(MLO/MLC/MLOC) and PCB one-stop service.

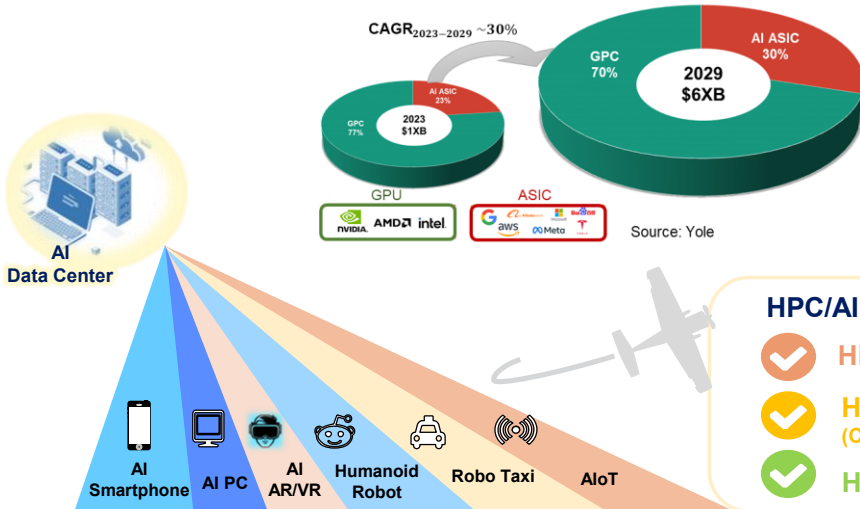
## MPI 2030 半導體市場~\$1Trillion



Source: TSMC

# MPI HPC/AI 探針卡挑戰

## Data Center - GPU and ASIC Forecast



## HPC/AI Probe Card Future Trend

- ✓ High Pin Count
- ✓ High CCC (Current Carrying Capacity)
- ✓ High Speed

Source: TSMC

# MPI Interface Technical Complexity Check in

SWTEST  
PROBE TODAY, FOR TOMORROW  
2023 CONFERENCE

STAYING AHEAD OF THE PROBE CARD COMPLEXITY CURVE

TERADYNE

Eric Shoemaker  
Steve Ledford

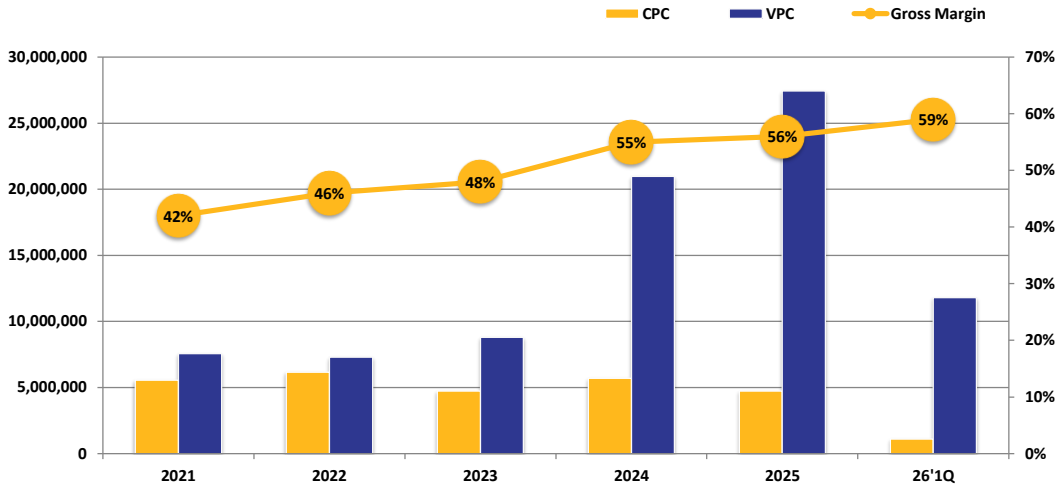
June 5 - 7, 2023

## Following the "2 x 4 Scaling" trend demonstrated over last two decades

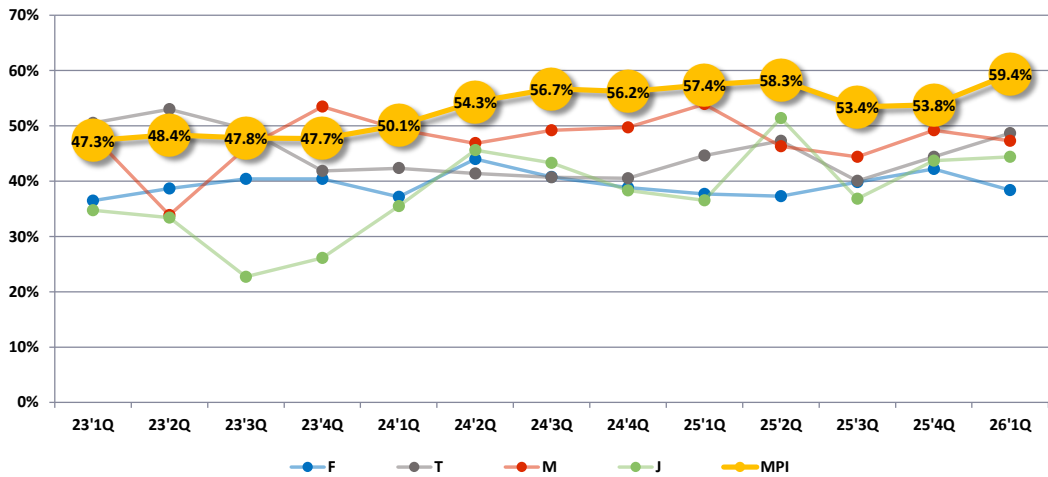
		Today	2030
<b>Pin Density</b>	Increasing DUT sites and pin count drive up the pin area density <b>Challenge:</b> Routing the I/O and power to the DUT combined with an increasing mechanical load	70 um pad pitch 16,000 pins per cm <sup>2</sup> 150+ Kg (total contact)	30 um pad pitch 64,000+ pins per cm <sup>2</sup> 300+ Kg (total contact)
<b>I/O</b>	Connections to high performance I/O: high speed digital, wireless, and high voltage <b>Challenge:</b> Signal integrity when combined with very tight pin and DUT spacing and high DUT count	112 Gbps (dig) 54 GHz (5G) 2 kV (automotive)	400+ Gbps (dig) 110+ GHz (6G) 8 kV (automotive)
<b>Power</b>	Large number of high current (>25A) device supplies require excellent precision <b>Challenge:</b> Supply voltage reduction (<700mV) combined with increasing number of power rails	700 mV (main power) 750 A (single rail) 500 μOhm (impedance)	<500 mV (main power) 2000 A (single rail) 100 μOhm (impedance)
<b>Thermal</b>	Removal of the DUT thermal energy due to self heating and support increased operating temp ranges <b>Challenge:</b> Increasing transistor count combined with tight DUT spacing rapidly increases thermal density	0.5 KW (self heating) 0C to +125C	1.0 KW (self heating) -40C to +160C

Source: Teradyne

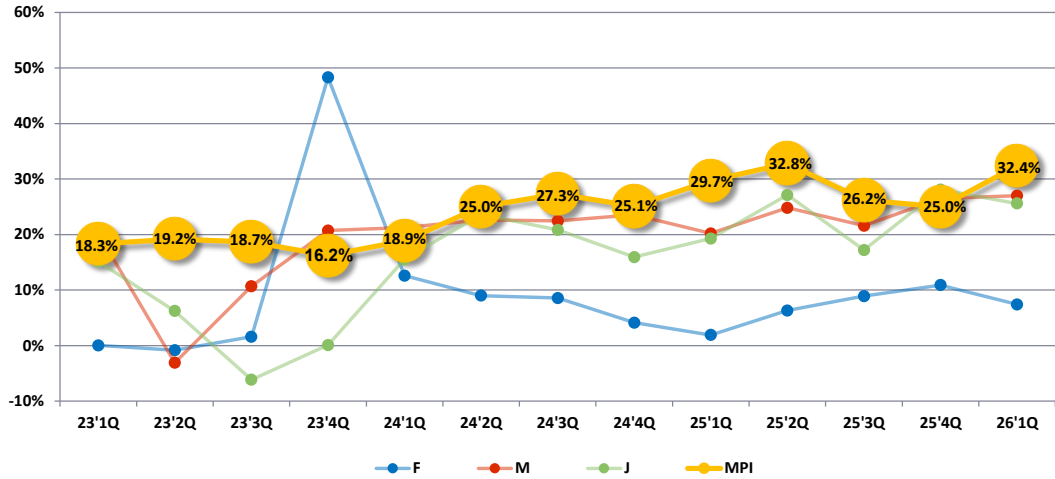
## MPI CPC & VPC 成長趨勢



## MPI 全球同業毛利率

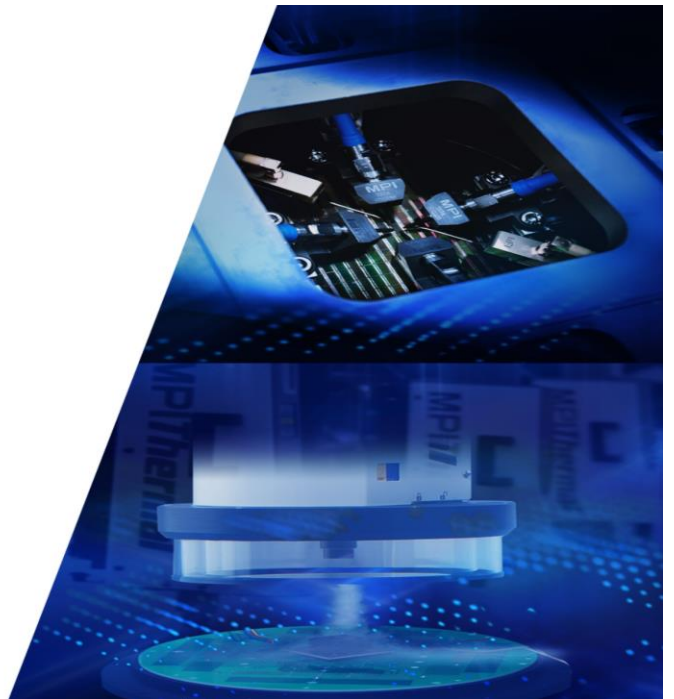


## MPI 全球同業營利率



MPI CORPORATION

## Thermal/AST



# MPI Thermal

Hot and Cold Air Flow  
Environmental Temperature Test

-100°C  +300°C  
**ThermaAir Series**  
Temperature Testing Systems



Applications & Industry Segments



Semiconductor



Automotive



Aerospace



Telecommunications



Fiber Optic



Electronics



Sensors



Advanced Technology

MPI CORPORATION

21

## MPI Thermal: 客戶導向

- **Innovational Temperature System 創新的溫度測試系統**

Ongoing R&D investments in platforms and improvements leads MPI to meet customer demands. Thermal systems have a number of patents to provide efficient energy saving products that helps clients to fulfill ESG responsibility.

- **Top Skillful RD Team 頂尖優秀專業的研發團隊**

MPI's thermal solutions are developed by industry veterans with over 100 years of combined experience.

- **Deep Cooperation with Leading Customers for Engineering and Production demand**

與世界領導級大廠深度合作, 提供工程及量產需求

Product application expands to automotive , 5G/RF communication , fiber optic , and sensing fields.

MPI CORPORATION

READY FOR THE TEST™

Company Confidential

22

# MPI Advanced Semiconductor Test

Engineering Probe Systems  
and  
RF Probe Products



50 – 300 mm

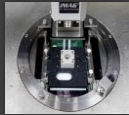


26 – 110 GHz

## Applications & Industry Segments



Device Characterization



High Power



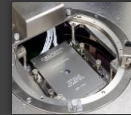
RF & mmW



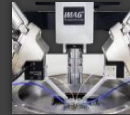
Design Validation



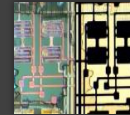
Failure Analysis



Wafer Level Reliability



Silicon Photonics



Laser Cutter

MPI CORPORATION

23

## MPI AST: 獨特的市場領導者

### ● Unique Global Position 全球獨特的市場地位

Combining Analytical probing solution and RF measurement core technology, MPI is top solution provider for full range hi-frequency response measurement.

### ● VOC Design 客戶導向設計

Design based on Voice of the customer to full-fill customers' needs.

### ● Complete Solution 提供完整的解決方案

Various series of products to cover wide range applications include Device Modeling, RF & mmW, WLR, High-Power, Failure Analysis, Extreme temperature test ...etc.

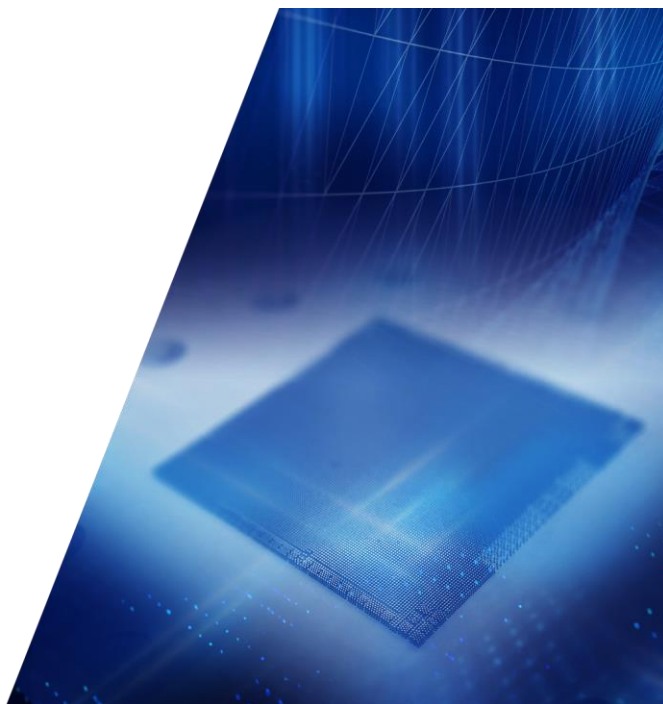
MPI CORPORATION

READY FOR THE TEST™

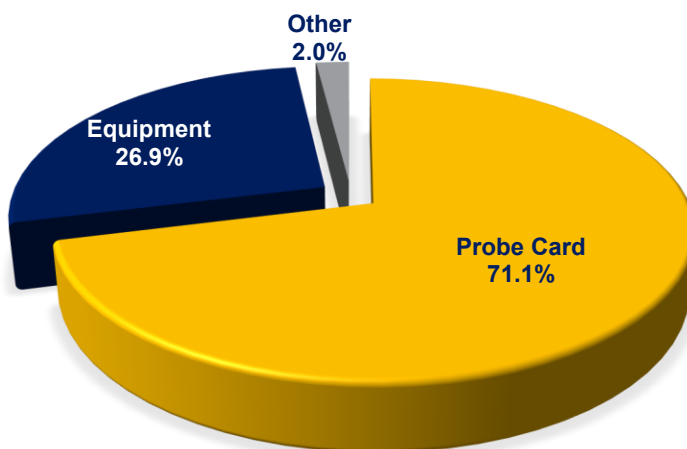
Company Confidential

24

# 財務報表



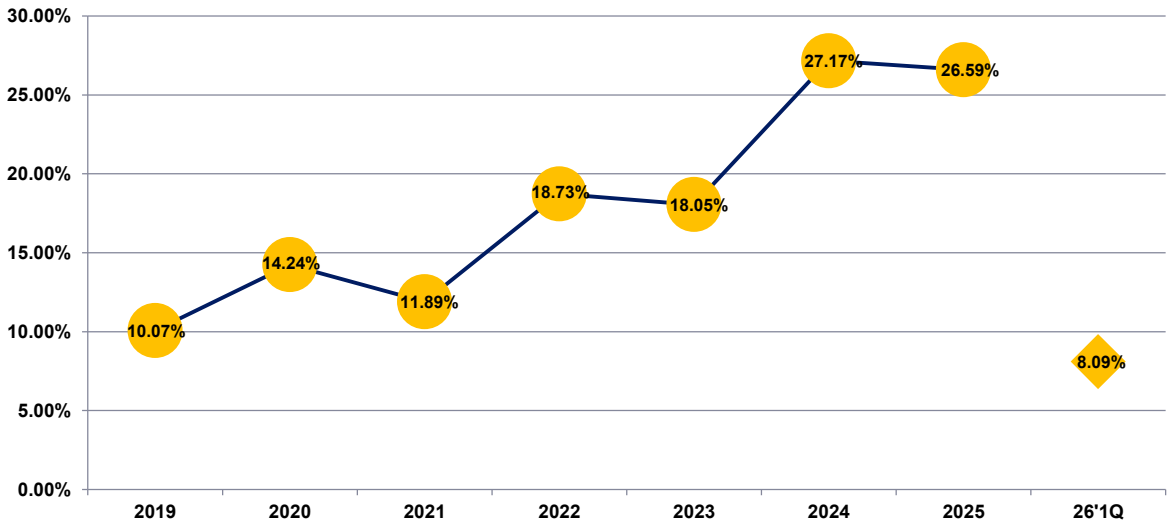
## MPI 2026 1Q 營收分布



## MPI 營業表現



## MPI 股東權益報酬率



## MPI 資產負債表

NT\$M	2026 1Q		2025 1Q	
Cash and Cash Equivalents	4,473	18%	5,965	31%
Fixed Assets	12,189	47%	7,640	39%
Total Assets	25,714	100%	19,536	100%
LT Debt	1,860	7%	945	5%
Shareholders' Equity	15,755	62%	10,456	54%
EBITDA	1,525	39%	887	31%

\*EBITDA=operating income + depreciation & amortization expenses

## MPI 綜合損益表

NT\$K	2026 1Q		2025 1Q		YoY	2025 4Q		QoQ
Net Sales	3,933,067	100%	2,828,698	100%	39.0%	3,835,917	100%	2.5%
Cost of Goods Sold	1,594,988	41%	1,205,368	43%	32.3%	1,773,148	46%	-10.1%
Gross Profit	2,338,079	59%	1,623,330	57%	44.0%	2,062,769	54%	13.4%
Operating Expense	1,065,069	27%	782,986	28%	36.0%	1,103,508	29%	-3.5%
Operating Income	1,273,010	32%	840,344	30%	51.5%	959,261	25%	32.7%
Investment Income & Others	252,184		47,380		432.3%	188,237		34.0%
Net Income (after tax)	1,227,478	31%	723,042	26%	69.8%	947,760	25%	29.5%
EPS (after tax)	12.53		7.68		63.2%	9.81		27.7%

# Thank You.

<http://www.mpi-corporation.com>